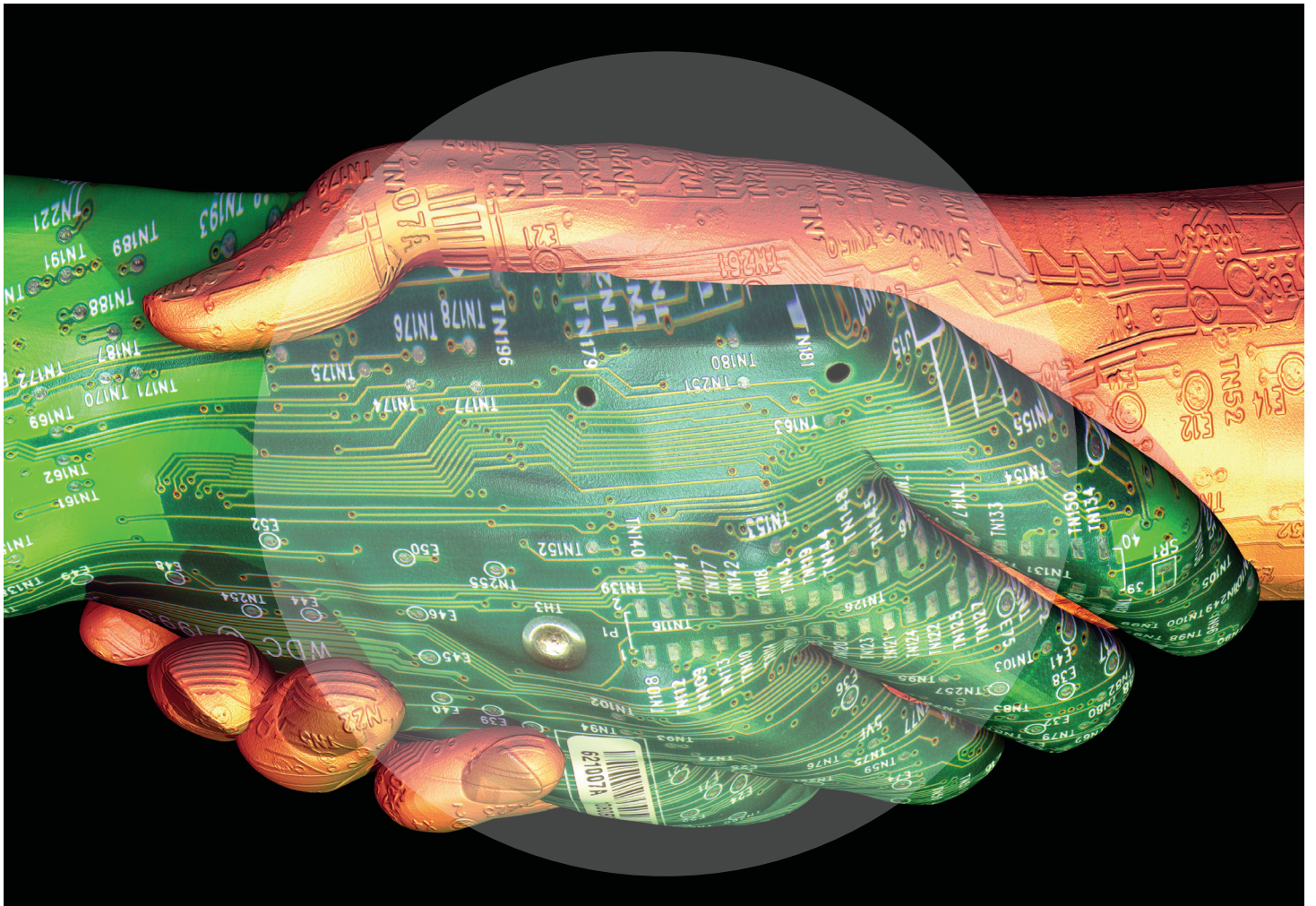


Partnering for Cyber Resilience

Risk and Responsibility in a Hyperconnected World - Principles and Guidelines



This document was created through a collaborative process with multiple partners.
Special thanks go to Project Advisers Deloitte.

© World Economic Forum

2012 - All rights reserved.

No part of this publication may be reproduced or transmitted in any form or by any means,
including photocopying and recording, or by any information storage and retrieval system.

REF 270912

Contents

4	Introduction
5	1. Commitment to Cyber Resilience
6	2. Principles for Cyber Resilience
8	3. Guidelines for Cyber Resilience: Programme Development
10	4. C-Suite Executive Checklist
13	5. Programme Development: Scope and Definitions
15	Acknowledgements

Introduction

The World Economic Forum recognizes that the risks, rewards and governance of the networked economy are core issues of the global agenda and fundamental for sustainable growth and stability. Additionally, it recognizes that only a coordinated approach will ensure that new opportunities for growth are fully leveraged and risks managed.

Throughout 2011, the World Economic Forum developed a multistakeholder project to identify and address emerging global systemic risks arising from the increasing connectivity of people, processes and objects. Some simple observations about the rapidly evolving environment can guide us in developing an appropriate response.

- Increasing dependence on connectivity for the normal functioning of society makes the protection of connectivity a critical issue for all; as a shared resource like clean air or water, the challenge is defined as one of interdependence
 - No one organization can resolve the issue by itself and a collaborative, multistakeholder approach must be taken; even competitors in a given industry must become partners in the effort to ensure a stable and trusted environment
- The cyber risk landscape evolves rapidly: defensive strategies mean we are always fighting the last battle, and there are many “unknown unknowns”
 - Solutions that focus on specifics will be outdated rapidly; a principle-based approach is required
- The free flow of information must continue to drive economic value; a locked down economy is a frozen economy
 - Resilience, not just bigger locks, is the goal; accepting that failures will occur, the objective is to restore normal operations and ensure that assets and reputations are protected
- The primary vulnerability of many organizations is human – awareness, leadership and execution
 - The role of leadership is to set the structure and tone; simple practices can dramatically improve an organization’s risk profile

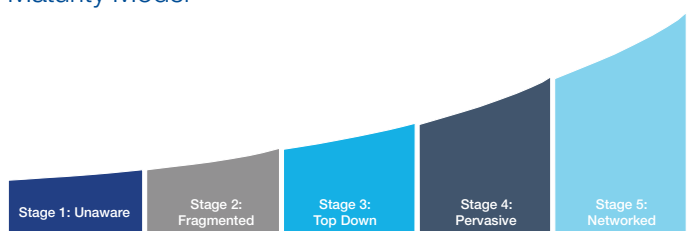
As such, the objective of this initiative is to seek commitment to a common set of shared principles for leadership – shifting mindsets from just securing perimeters to also including a focus on interdependence and resilience.

These principles are aimed at all organizations, regardless of industry, sector, jurisdiction, geography or level of current expertise. They are intended to be non-prescriptive, as context will vary. They are based on simple organizational good practices and a recognition of the distributed nature of the challenge.

The principles are supported by a set of guidelines to which organizations can refer to help develop their own responses. A simple maturity model and definition of terms is also provided for common reference.

Figure 1: Maturity Model for Organizational Cyber Resilience

Maturity Model



1. Commitment to Cyber Resilience

We, the undersigned, support the multi-industry, multinational and multistakeholder initiative and principles to improve systemic resilience to cyber risks.

The widespread adoption of these principles is intended to help raise business standards associated with hyperconnected information systems across the world and contribute to the shared goals of economic stability and prosperity.

We collectively recognize the interdependence of private and public sector organizations in the global, hyperconnected environment. As such, we recognize our role in contributing to the overall levels of cyber risk mitigation on a national and global level.

We support the Principles for Cyber Resilience (“Principles”), derived from multistakeholder dialogue across multiple regions and sectors. The Principles (detailed further below) are:

1. Recognition of interdependence: All parties have a role in fostering a resilient shared digital space
2. Role of leadership: Encourage executive-level awareness and leadership of cyber risk management
3. Integrated risk management: Develop a practical and effective implementation programme
4. Promote uptake: Where appropriate, encourage suppliers and customers to develop a similar level of awareness and commitment

With this signature, we commit to these Principles in support of creating and maintaining a resilient online environment and a network of mutually trusted entities.

We therefore support and call for broad support of this initiative.

Name (print):

Position:

Company:

Date:

Signature:

2. Principles for Cyber Resilience

2.1 The organization recognizes the interdependent nature of our hyperconnected world and its own role in contributing to a safe shared digital environment

We are all only as strong as the weakest link in the chains upon which we all depend; we each contribute to the safety of our hyperconnected world. An open, secure and resilient online space is a public good; all actors share responsibility for creating and supporting this resource.

2.2 The executive management team recognizes its leadership role in setting the tone and structure for cyber resilience

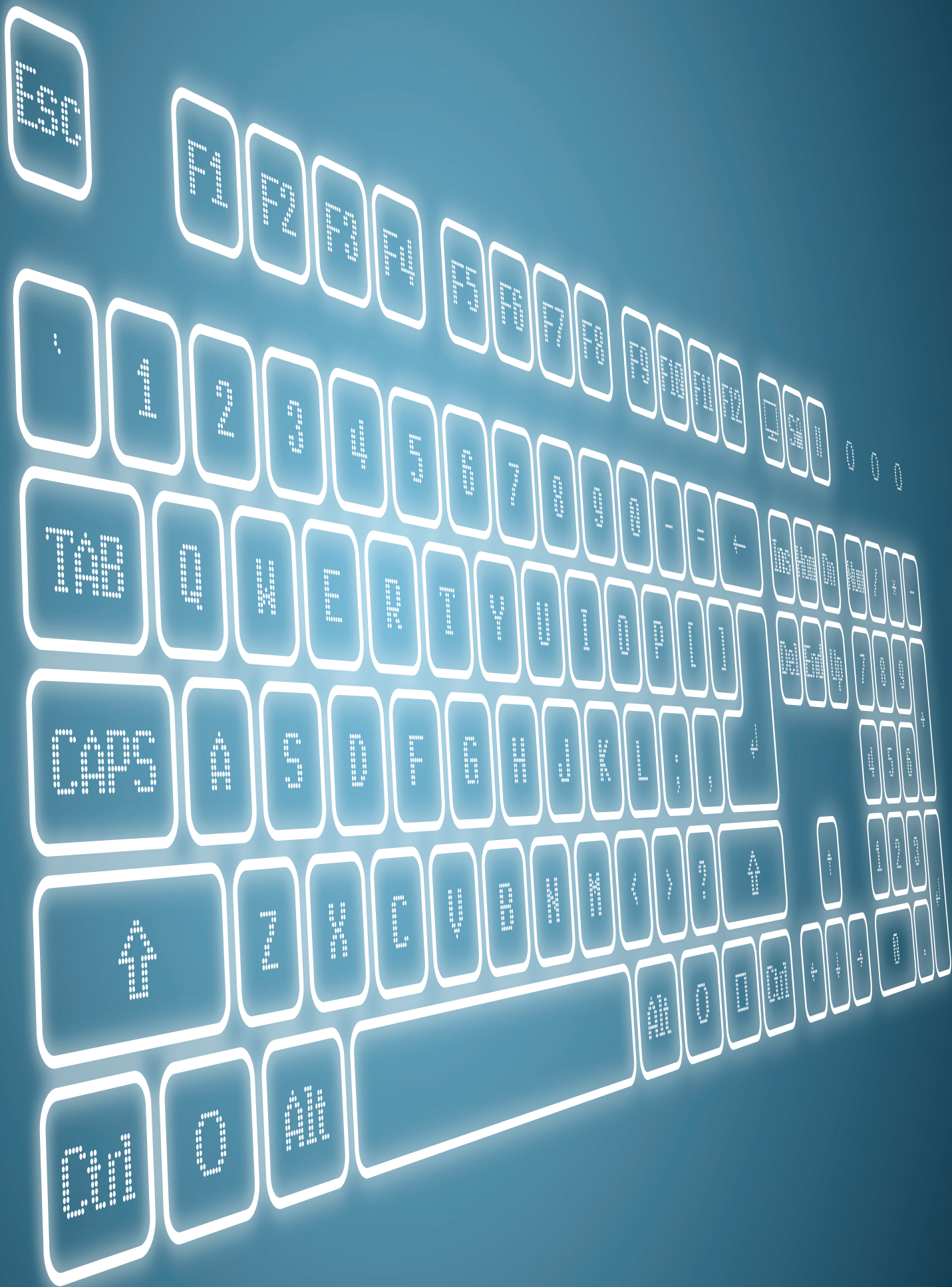
In line with its fiduciary and other leadership duties, the executive leadership recognizes the important nature of mitigating cyber-related risks as an essential element of the on-going viability and success of their institution, safeguarding its intellectual property and protecting the information it holds in order to deliver products or services to its customer or constituent base, consistent with the applicable sector and jurisdiction law.

2.3 The organization recognizes the importance of integrating cyber risk management within its broader risk practices and in line with these Principles and Guidelines

Consistent with sector and jurisdiction-applicable uniform good information practices now or hereafter in effect, a specific programme geared towards managing known cyber risks should be continuously pursued by the entity that can take account of guidance and standards relevant to the sectors and regions in which it operates. In doing so, it reduces the risk of harm to itself, positively contributes to the resilience of the connected information environments in which it operates and demonstrates good (corporate) citizenship.

2.4 The organization encourages its suppliers to adopt these Principles and Guidelines

In recognition that widespread adoption of these Principles contributes to the continued and enhanced opportunity for all stakeholders to benefit from hyperconnectivity, and to more effectively secure supply chains and manage the interdependence and vulnerability that this connectivity entails, the organization should leverage its relationships to encourage others to adopt the Principles.



3. Guidelines for Cyber Resilience: Programme Development

This section defines a set of capabilities that enterprises should aspire to meet, at a minimum, when implementing their own cyber risk management programme (“Programme”). The items below are intended as non-prescriptive guidance on the capabilities that any such effective Programme should include, and may describe practices that are already in place. Specific standards, processes and legal requirements will vary by industry and jurisdiction and may change over time, and specific instances of a relevant Programme will be informed by such context.

3.1 Starting Assumptions

- 3.1.1 The interdependence of all organizations within the online environment provides a foundational assumption for all cyber risk management.
- 3.1.2 Improving cyber risk management practices within a single organization contributes to global cyber resilience.
- 3.1.3 A risk-based approach is an efficient and effective approach to deal with cyberthreats.
- 3.1.4 Recognizing that 100% risk mitigation is not possible in any complex system, the overarching goal of a risk-based approach to cybersecurity is system resilience to survive and quickly recover from attacks and accidents.

3.2 Governance: Leadership and Tone

- 3.2.1 The executive management team is accountable for overseeing the development and implementation of an effective programme of best practices for cyber risk management within its broader risk management activities.
 - 3.2.1.1 The Programme should be based on the Principles and other relevant company priorities, and the executive management team should provide leadership, resources and active support for the implementation of the Programme.
 - 3.2.1.2 The executive management team ensures that the Programme is internally reviewed for effectiveness and, when shortcomings are identified, corrective action is taken.
- 3.2.2 The Chief Executive Officer (or equivalent) and the executive management team demonstrates visible and active commitment to the implementation of the Principles.
- 3.2.3 The Chief Executive Officer (or equivalent) is ultimately responsible for consistently carrying out the Programme with clear lines of authority, accountability, delegation and responsibility.
- 3.2.4 Executives and managers are provided with the tools and authority to promote resilience, and mitigate cyber risks that could impact and/or originate from their respective lines of business, and otherwise perform their responsibilities for the organization in a way that is consistent with the Principles.
- 3.2.5 The Chief Executive Officer (or equivalent) has a clear plan and decision path for action and communication in the event of a significant failure of networked information systems provided or used by the organization.

3.3 Programme Implementation: Critical Operational Components

- 3.3.1 The concepts and elements of the Programme are integrated into the overall enterprise risk management programme where relevant.
- 3.3.2 The Programme includes a mechanism to assess and monitor cyber risk.
 - 3.3.2.1 The Programme forms part of the organization's on-going risk management practices and includes policies that are intended for identifying, assessing, measuring, prioritizing, monitoring, mitigating and transferring cyber risk, applying existing best practices or guidelines where possible.
 - 3.3.2.2 The Programme includes internal impact assessments on operations, assets and reputation in both qualitative and quantitative (financial) terms.
 - 3.3.2.3 The Programme includes specific strategies that are intended to reduce mean time to recovery (i.e. improve resilience) in the event of major attacks or failures.
 - 3.3.2.4 The organization monitors the effectiveness of improving cyber resilience and reducing cyber risk.
 - 3.3.2.5 The organization regularly evaluates and ensures that it allocates adequate resources to its risk management strategy.
- 3.3.3 The organization periodically internally verifies its compliance with applicable rules and regulations that are relevant for its cyber risk exposure.
- 3.3.4 The organization's practices and policies incorporate and reflect its commitment to improving cyber resilience and reducing risk.

3.4 Suppliers and Third Parties

- 3.4.1 The organization ensures that parties that are not directly subject to internal company policies – but the behaviour of which is made reliable by contract including its suppliers and relevant third parties – adhere to the organization's specific cyber risk management standards or industry best practices in line with the Principles, and formalize this requirement using such contractual obligations.
- 3.4.2 Where appropriate, contractors and suppliers should receive training in the Programme.

4. C-Suite Executive Checklist

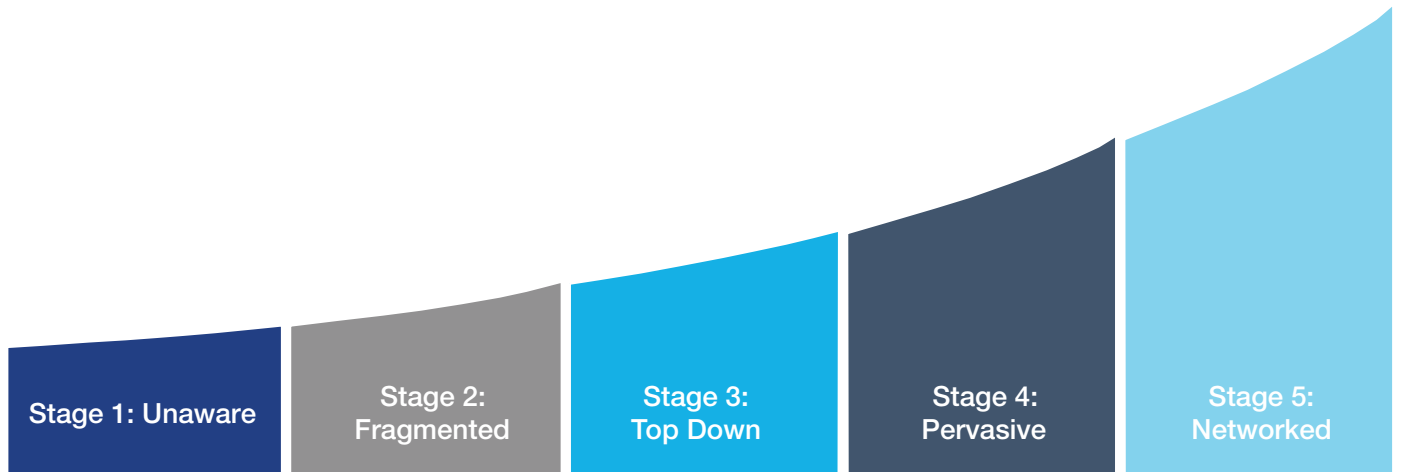
The following section presents a simple checklist tool for chief executives and other C-suite executives to help guide their internal review of their organization's cyber resilience capabilities.

The tool is intended to provide executives with both general and specific information to help inform their actions for the organization. It provides a rough composite score to locate the organization on a "hyperconnection readiness curve" set forth below. The questions asked in the tool can also help executives to identify specific strengths and weaknesses – and paths to improvement within their respective organization.

Note: Because of the subjectivity of evaluation from one entity to another, and the current absence of metrics for each of the variables below, the benchmarking is not intended for use in comparing the Programme of one entity against another, nor the conformity of a particular Programme against any external norms or rules.

		1: Does not describe my organization at all 5: Accurately describes my organization				
Governance						
1.	The chief executive and executive management team are responsible for overseeing the development and confirming the implementation of a Programme of best practices for cyber risk management	1	2	3	4	5
2.	The chief executive and executive management team ensure that the Programme is reviewed for effectiveness and, when shortcomings are identified, corrective action is pursued	1	2	3	4	5
3.	The chief executive and the executive management team demonstrate visible and active commitment to the implementation of the Principles	1	2	3	4	5
4.	Executives and managers are responsible for understanding at the appropriate level how cyber risks could impact and originate from their line of business	1	2	3	4	5
5.	Senior leadership understands who is responsible for managing cyber risk when managing security incidents	1	2	3	4	5
6.	The organization has access to cyber expertise at its highest management levels	1	2	3	4	5
7.	The organization undertakes to continuously improve the integration of its cyber risk management with its other risk management initiatives	1	2	3	4	5
8.	The chief executive (or equivalent) has a clear decision path for action and communication in response to a significant security failure or accident	1	2	3	4	5
Programme						
9.	The organization conducts comprehensive assessments of its vulnerabilities to internal and external cyber risks appropriate for its industry and sector	1	2	3	4	5
10.	The organization monitors the effectiveness of its cyber risk management strategy	1	2	3	4	5
11.	The organization periodically internally verifies its compliance with rules and regulations	1	2	3	4	5
12.	The organization's commitment to the Programme is reflected in its policies and practices	1	2	3	4	5
13.	Managers, employees and agents receive specific training on the Programme, tailored to relevant needs and circumstances	1	2	3	4	5
14.	The organization has identified its data and information as vital assets, and organizes its Programme around the recognition that data and information have value that can be separately recognized and protected	1	2	3	4	5
15.	The risk management Programme includes all material third-party relationships and information flows	1	2	3	4	5
16.	The organization conducts comprehensive internal short- and long-term cyber risk impact assessments	1	2	3	4	5
Network						
17.	The organization seeks to ensure that its suppliers and relevant third parties adhere to the organization's specific cyber risk management standards or industry best practices, in line with the Principles, and formalizes this requirement using contractual obligations	1	2	3	4	5
18.	The organization has built relationships with its peers and partners to jointly manage cyber risk and more effectively deal with cyber incidents	1	2	3	4	5
19.	The risk management Programme includes all material third-party relationships and information flows	1	2	3	4	5
Average (gives maturity stage)						

Maturity Model



The organization sees cyber risk as largely irrelevant, and cyber risk does not form part of the organization's risk management process. The organization is not aware of its level of interconnectedness.

The organization recognizes hyperconnectivity as a potential source of risk, and has limited insight in its cyber risk management practices. The organization has a siloed approach to cyber risk, with fragmented and incidental reporting.

The Chief Executive Officer has set the tone for cyber risk management, has initiated a top-down threat-risk-response program but does not view cyber risk management as a competitive advantage.

The organization's leadership takes full ownership of cyber risk management, has developed policies and frameworks, and has defined responsibilities and reporting mechanisms. It understands the organization's vulnerabilities, controls, and interdependencies with third parties.

Organizations are highly connected to their peers and partners, sharing information and jointly mitigating cyber risk as part of their day-to-day operations. Its people show exceptional cyberawareness and the organization is an industry leader in managing cyber risk management.



5. Programme Development: Scope and Definitions

This initiative takes an “act locally, think globally” approach. It focuses on the improvement of the local cyber resilience of individual organizations. Through coordination on common principles, these local actions create global benefits. Common principles leverage the effectiveness of individual organizations’ actions into a cohesive community of cyber resilience.

A critical roadblock to shared understanding and to resolving any challenge is differences in interpretation of the scope and terms that define the issue. This section sets out definitions and describes some of the terms used above that are relevant in designing, developing and deploying solutions for cyber risk under the Principles.

5.1 Cyber

- 5.1.1 “Cyber” refers to the interdependent network of information technology infrastructures, and includes technology “tools” such as the Internet, telecommunications networks, computer systems, and embedded processors and controllers in critical industries.

5.2 Cybersecurity

- 5.2.1 “Cybersecurity” refers to analysis, warning, information sharing, vulnerability reduction, risk mitigation and recovery efforts for networked information systems.

5.3 Cyber Risks

- 5.3.1 “Cyber risks” are defined as the combination of the probability of an event within the realm of networked information systems and the consequences of this event on assets and reputation.
- 5.3.2 Cyber risks are a business issue with technical aspects. Cyber risk impacts and is impacted by all areas of the organization.
- 5.3.3 “Cyber threats” are potential cyber events that may cause unwanted outcomes, resulting in harm to a system or organization. Threats may originate externally or internally and may originate from individuals or organizations.
- 5.3.4 “Cyber vulnerabilities” are susceptibilities or insufficient defences in the protection of an asset or group of assets and capacities from cyber threats.
- 5.3.5 The primary “values at risk” from cyber threats and vulnerabilities are an entity’s assets and reputation. Because of critical dependencies, the consequences on these assets could be the result of a larger, cascading event beyond the entity’s direction or control.

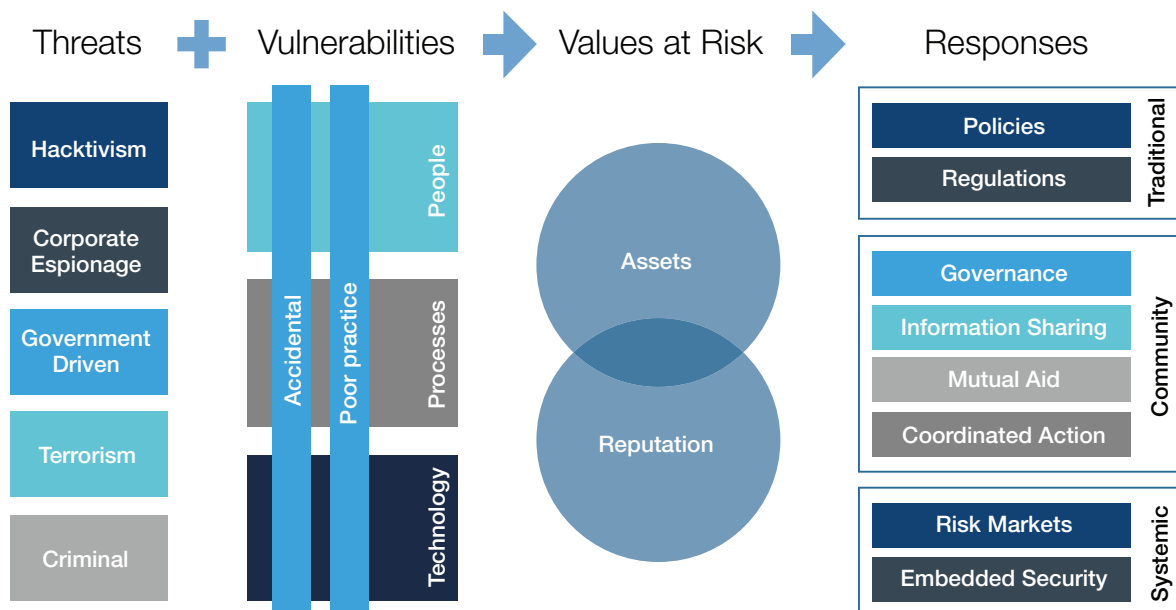
5.4 Cyber Risk Management

- 5.4.1 In addition to technical measures, cyber risk management seeks to influence human behaviour and norms, as well as technical controls and machine-to-machine interactions, and aims to coordinate activities and processes to prevent unwanted consequences.
- 5.4.2 A “risk assessment” is the process engaged in by an organization to analyse, evaluate and understand the spectrum of risks, their potential likelihood and their severity in order to enable it to act to mitigate unacceptable risk to the organization.
- 5.4.3 “Risk-transfer strategies” (such as indemnification, insurance and structured risk-transfer solutions) are ways for an organization to address risk.

5.5 Cyber Resilience

- 5.5.1 As an additional dimension of cyber risk management, “cyber resilience” is defined as the ability of systems and organizations to withstand cyber events, measured by the combination of mean time to failure and mean time to recovery.

Figure 2: Cyber Risk Framework



Acknowledgements

Steering Board

Natarajan Chandrasekaran
Michael Chertoff
Ian Livingston
William E. McCracken
Robert Wainwright

Chief Executive Officer and Managing Director
Co-Founder and Managing Principal
Chief Executive Officer
Chief Executive Officer
Director

Tata Consultancy Services
Chertoff Group
BT Group
CA Technologies
Europol (European Police)

Working Group

Mustaque Ahamad
Eric Allegakoen
Mohd Amin
Jolyon Barker
Drew Bartkiewicz
Mark Bauhaus
Jennifer Byrne
William Casazza
Paloma Castro
Steve Culp
Scott David
Serge Dumont
John Evans
Stacy Feuer
Allan Friedman
Marc Goodman
Cristin Goodwin
Meghan Hannes
Kevin Harried
Phillip Harrington
Bret Hartman
Anwarul Hasan
Ray Johnson
Yuecel Karabulut
David Kirkpatrick
Robert Kirkpatrick
Susan Kish
Tarkan Maner
Christophe Nicolas
JP Rangaswami
Paul Saffo
Alexis Samuel
Murat Sonmez
Deirdre Stanley
Ray Stanton
Owen Tripp
Andrew Vitrano
Mark Walsh
Jody Westby

Professor and Director
Vice-President, Global Audit and Assurance Services
Chairman
Managing Director, Global Technology, Media and Telecommunications
Vice-President, Strategy Services
Executive Vice-President and General Manager
Vice-President
Senior Vice-President and General Counsel
Director, Global Corporate Affairs
Managing Director, Risk Management
Partner (OIX Legal Counsel)
Group Vice-Chairman and Chairman, Asia Pacific
Vice-President, Business Innovation
Associate Director for International Consumer Protection
Research Director, Center for Technology Innovation
Faculty Member and Security Adviser
Senior Attorney
Managing Director
Senior Vice-President, Risk Management
Executive Vice-President, Risk, and Chief Administrative Officer
Chief Technology Officer, RSA
Director, Risk Management
Senior Vice-President and Chief Technology Officer
Chief Security Adviser
Founder and Chief Executive Officer
Director
Head of Cross-industry Platforms
President and Chief Executive Officer
Senior Vice-President and Chief Technology Officer
Chief Scientist
Author and Forecaster
Chief Risk Officer
Executive Vice-President, Global Field Operations
General Counsel
Global Head of Business Continuity, Security and Governance
Chief Operating Officer
Associate General Counsel and Assistant Corporate Secretary
Vice-President, Information Security
Chief Executive Officer

Georgia Tech Information Security Center
Adobe
Impact
Deloitte (Project Adviser)
Mashery
Juniper Networks
Lockheed Martin
Aetna
LVMH
Accenture
K&L Gates
Omnicom
Lockheed Martin
Federal Trade Commission
Brookings Institution
Singularity University
Microsoft Corporation
CloudInsure
FIS/Capco
CA Technologies
EMC
SwissRe
Lockheed Martin
SAP
Techonomy
UN Global Pulse
Bloomberg
Dell Wyse
Kudelski Group
Salesforce.com
Discern Analytics
Wipro
TIBCO Software
Thomson Reuters
BT Group
Reputation.com
IntraLinks
BAE Systems
Global Cyber Risk

Additional Advisers

Colin Adams
Rod Beckstrom
Michael Fertik
Lee Hibbard

Peter Hustinx
Viktor Mayer-Schönberger
Jun Murai
Ken Senser
Hamadoun I. Touré
Atsushi Umino
Jonathan Zittrain

Director of Commercialisation, School of Informatics
Chief Executive Officer
Founder and Chief Executive Officer
Secretary, Cybercrime Convention Committee and Head of Data Protection and Cybercrime, Directorate-General of Human Rights and Rule of Law Supervisor
Professor, Internet Governance and Regulation
Dean and Professor, Faculty of Environment and Information Studies
Senior Vice-President of Global Security, Aviation and Travel
Secretary-General
Director for International Policy Coordination, Global ICT Strategy Bureau
Professor of Law and Professor of Computer Science

University of Edinburgh
ICANN
Reputation.com
Council of Europe

European Data Protection
Oxford Internet Institute
Keio University
Wal-Mart
International Telecommunication Union (ITU)
Ministry of Internal Affairs and Communications
Harvard University

Contact: Derek O'Halloran, Global Leadership Fellow Information Technology Partnerships, World Economic Forum
Elena Kvochko, Information Technology Partnerships, World Economic Forum,
www.weforum.org/cyber



COMMITTED TO
IMPROVING THE STATE
OF THE WORLD

The World Economic Forum is an independent international organization committed to improving the state of the world by engaging business, political, academic and other leaders of society to shape global, regional and industry agendas.

Incorporated as a not-for-profit foundation in 1971 and headquartered in Geneva, Switzerland, the Forum is tied to no political, partisan or national interests.

World Economic Forum
91-93 route de la Capite
CH-1223 Cologny/Geneva
Switzerland

Tel.: +41 (0) 22 869 1212
Fax: +41 (0) 22 786 2744

contact@weforum.org
www.weforum.org